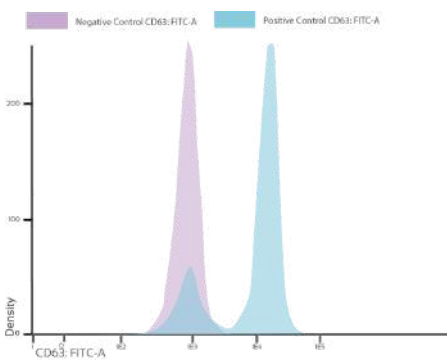


BASOSTEP

Determination of activation following allergen stimulation using flow cytometry

Kit performance:



Using specific allergens, this test can provide highly reliable information on the release capacity of IgE-bearing basophils.

When IgE receptors on basophils cross-link with an allergen, the cells undergo degranulation via cytoplasmic granules containing the transmembrane protein CD63, which fuse with the plasma membrane and release inflammatory mediators. Consequently, the CD63 antigen is exposed as a marker of basophil activation.

*The histogram shows the analysis of a blood sample from a healthy individual using BasoStep. We can analyse the results using the fluorescence intensity of CD63.

Kit contents:

- ✓ Lyophilised stimulation buffer
- ✓ Positive control (fMLP + anti-IgE)
- ✓ Multicolour antibody cocktail
- ✓ CD63 FITC
- ✓ CD63 FITC
- ✓ CD203c PE
- ✓ HLA-DR PerCP
- ✓ CD123 APC

Advantages



SAFER

Does not expose the patient to any allergens. Recommended test for babies and young children.



QUICK AND SIMPLE

Includes positive and negative controls in lyophilised tubes for easier and more efficient handling.



HIGH SPECIFICITY

Accurate identification of basophils thanks to the CD203c marker, which is specific to basophils and mast cells.



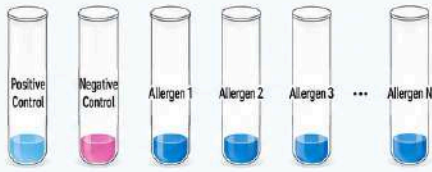
VERSATILE KIT

Available in three different antibody configurations and price points to suit clinical needs.

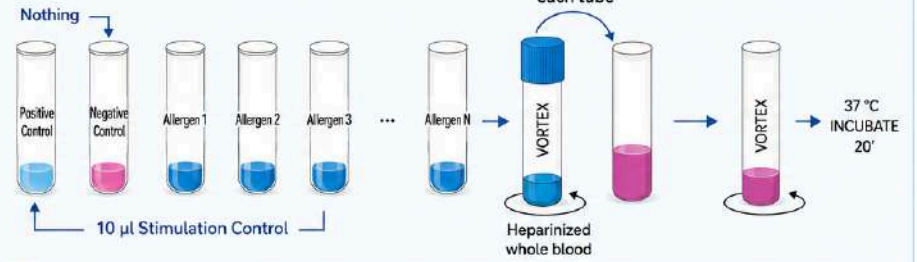
Reference	Description
BSTP-S-100	Staining reagent: CD63 FITC, CD203c PE. Positive Control. Estimulation Buffer
BSTP-100	Staining reagent: CD63 FITC, CD203c PE, HLA-DR PERCP, CD123 APC. Positive Control. Estimulation Buffer

ASSAY PROCEDURE

1. SAMPLE PREPARATION

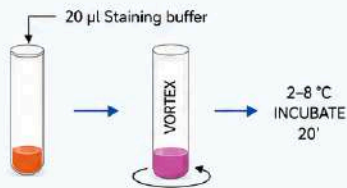


2. DEGRANULATION

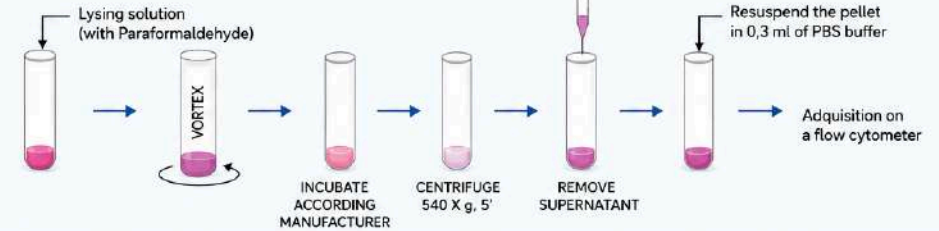


(i) We recommend testing several dilution of each Allergen (e.g. 1:100; 1:1000; 1:10.000; 1:100.000; 1:1.000.000)

3. LABELLING



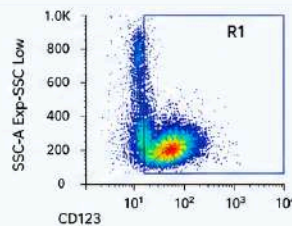
4. LYSING AND FIXATION



5. ADQUISITION



Set on the cytometer to store only the events in the region R1 as imagen right:



Acquire and store all R1 events possible. It is recommended to acquire at a low or medium speed to avoid cell aggregates.

Available allergens

CATALOGUE OF RECOMBINANT ALLERGENS
Solutions for allergy diagnosis by source

GROUP	REF.	ALLERGEN
FOOD	IML0007	Arachis sativa
	IML0008	Arachis sativa
	IML0009	Arachis sativa
	IML0010	Arachis sativa
	IML0011	Arachis sativa
	IML0012	Arachis sativa
	IML0013	Arachis sativa
	IML0014	Arachis sativa
	IML0015	Arachis sativa
	IML0016	Arachis sativa
	IML0017	Arachis sativa
	IML0018	Arachis sativa
MOLD	IML0019	Aspergillus fumigatus
	IML0020	Aspergillus fumigatus
	IML0021	Aspergillus fumigatus
	IML0022	Aspergillus fumigatus
	IML0023	Aspergillus fumigatus
	IML0024	Aspergillus fumigatus
	IML0025	Aspergillus fumigatus
	IML0026	Aspergillus fumigatus
	IML0027	Aspergillus fumigatus
	IML0028	Aspergillus fumigatus
	IML0029	Aspergillus fumigatus
	IML0030	Aspergillus fumigatus
ANIMALS	IML0031	Canis familiaris
	IML0032	Canis familiaris
	IML0033	Canis familiaris
	IML0034	Canis familiaris
	IML0035	Canis familiaris
	IML0036	Canis familiaris
	IML0037	Canis familiaris
	IML0038	Canis familiaris
	IML0039	Canis familiaris
	IML0040	Canis familiaris
	IML0041	Canis familiaris
	IML0042	Canis familiaris
POLLEN	IML0043	Alnus
	IML0044	Alnus
	IML0045	Alnus
	IML0046	Alnus
	IML0047	Alnus
	IML0048	Alnus
	IML0049	Alnus
	IML0050	Alnus
	IML0051	Alnus
	IML0052	Alnus
	IML0053	Alnus
	IML0054	Alnus

Can't find the allergen you're looking for?
Please get in touch, we can offer bespoke solutions or the project may already be in development.

www.immunostep.com

Basostep supports a broad panel of clinically relevant allergens, including food, environmental, and inhalant sources such as pollens, mites, animal dander, and molds.

Explore a curated selection of well-characterized allergens commonly used in allergy diagnostics.

DOWNLOAD CATALOGUE:



Avda. Universidad de Coimbra, s/n
Cancer Research Center (C.I.C),
Campus Miguel de Unamuno
37007 Salamanca (Spain)
(+34) 923 294 827
info@immunostep.com
www.immunostep.com