

# Stem Cell Kit

| Reference | Test    |
|-----------|---------|
| SCK       | 50 test |



## INTRODUCTION

"Stem Cell Kit" is a kit designed for quantitative determination of hematopoietic stem cells (HSCs) CD34 positive due to the specificity of the following antibodies:

The anti-CD45 antibody recognizes type C tyrosine receptor protein phosphatase, a protein of 220 kD member of Leukocyte Antigen family.

The anti-CD34 recognizes the progenitor hematopoietic cell protein antigen CD34, a monomeric type I membrane glycoprotein 110 kD present<sup>13,14</sup> in immature hematopoietic precursor cells from the bone marrow<sup>18</sup> and blood, and in endothelium capillary blood<sup>15,16</sup> from many tissues.

## MATERIALS PROVIDED

The kit includes a vial of CD45 / CD34, a CD45/ IgG1 isotype control vial, counting tubes, a vial of 7-AAD and a bottle of lysis solution 10X.

- A: CD45 / CD34: Murine Monoclonal antibodies. CD45 is clone H130. CD34 is clone 581.
- Reactive is in an aqueous solution and contains a stabilizing protein and 0.09% sodium azide (NaN<sub>3</sub>).
- B: CD45 / IgG1 isotype control: Murine Monoclonal antibodies. CD45 is clone H130. IgG1 isotype control is clone B11 / 6.
- Reactive is in an aqueous solution and contains a stabilizing protein and 0.09% sodium azide.
- StepCount counting tubes: tubes for use in flow cytometry containing a known number of microspheres of 4.2 micron of diameter capable of emitting fluorescence (the number appears on the tube label)
- 7-AAD: 7-Amino-Actinomycin liquid and 0.09% sodium azide (NaN<sub>3</sub>) to identify non viable cells
- 10X lysis solution: consisting of ammonium chloride (NH<sub>4</sub>Cl) to lyse erythrocytes and 0.09% sodium azide (NaN<sub>3</sub>).

| Reactive             | Concentration (µg/ml) |
|----------------------|-----------------------|
| CD45 FITC            | 25                    |
| CD34 PE              | 10                    |
| Isotype control IgG1 | 10                    |
| 7-AAD                | 45-65                 |

## MATERIALS REQUIRED BUT NOT PROVIDED

- Centrifuge
- Micropipettes for dispensing volumes from 5 µl to 2 ml
- Blood collection tubes with anticoagulant.
- Phosphate buffered saline (PBS) with 0.09% sodium azide. It is recommendable to add 0.5% BSA
- Vacuum system
- Flow cytometer equipped with laser and appropriate fluorochrome filters
- Vortex Agitator

## RECOMMENDED USAGE

"Stem Cell Kit" from Immunostep is designed for use in flow cytometry to determine the percentage and counts of CD34 + / CD45 + cells and viable cells discriminating between non-viable cells. Additionally, the number of false positives caused by nonspecific staining can be detected with the use of CD34 isotype control.

With this kit you can analyze any sample, including blood, bone marrow, mobilized blood, leukapheresis products, umbilical<sup>11</sup> blood cord.

## CLINICAL RELEVANCE

Count CMH CD34 + plays a very important role in the autologous and allogeneic transplantation and are widely used in the treatment of hematological diseases, solid tumors or autoimmune disorders, because of this, a rapid hematopoietic reconstitution depends on reinfusion of a large number of MHC.

## PRINCIPLES OF THE TEST

Kit allows the identification of CD34 + cells and link together their number with the identified known number of spheres discriminating between viable and non-viable cells and discarding false positives produced by non-specific staining of the isotype.

## APPROPRIATE STORAGE AND HANDLING CONDITIONS

Store in the dark, refrigerated between 2 °C and 8 °C. DO NOT FREEZE. The antibody is stable until the expiry date stated on the vial label if kept at 2°C-8°C. Do not use after the date indicated.

Once the vial is open, the product is stable for 90 days.

## EVIDENCE OF DETERIORATION

Reagents should not be used if any evidence of deterioration is observed. For more information, please contact our technical service: [tech@immunostep.com](mailto:tech@immunostep.com)

The product's normal appearance is a semi-transparent, colourless liquid. It should not be used if liquid medium is cloudy or contains precipitate. It should be odourless.

## RECOMMENDATIONS AND WARNINGS

- a) The reagents contain sodium azide. In acid conditions, it is transformed into hydrazoic acid, a highly toxic compound. Azide compounds must be diluted in running water before being discarded. These conditions are recommended so as to avoid deposits in plumbing, where explosive conditions could develop. The safety data sheet (SDS) is available online at [www.immunostep.com](http://www.immunostep.com)
- b) Avoid microbial contamination of the reagent.
- c) Protect from light. Use dim light during handling, incubation with cells and prior to analysis.
- d) Never mouth pipette.
- e) In the case of contact with skin, wash in plenty of water.
- f) The samples should be handled in the same way as those capable of transmitting infection. Appropriate handling procedures should be guaranteed.
- g) Do not use after the expiry date indicated on the vial.
- h) Deviations from the recommended procedure could invalidate the analysis results.
- i) FOR *IN VITRO* DIAGNOSTIC USE.
- j) For professional use only.
- k) Before acquiring the samples, it is necessary to make sure that the flow cytometer is calibrated and compensated.

### SAMPLE COLLECTION

The extraction of venous blood samples should be carried out in blood collection tubes using the appropriate anticoagulant (EDTA or heparin)<sup>2,3</sup>. For optimum results, the sample should be processed during the six hours following the extraction. Samples which cannot be processed within the 48 hours following the extraction should be discarded.

### SAMPLE PREPARATION

1. It is recommended to make a total cell count before proceeding to trial. If the number of cells is greater than  $50 \times 10^3$  cells /  $\mu$ l you should make a dilution with PBS / BSA (see Materials required but not provided) so that cell concentration decreases (remember scoring dilution).
2. Mark two tubes StepCount as described below:
  - Tube N° 1: CD45/CD34/7-AAD
  - Tube N° 2: CD45/Isotype Control/7-ADD
3. Add 20  $\mu$ l of A reagent: CD45 FITC / CD34 PE in tube N°1. Pipette 20  $\mu$ l of B reagent: CD45 FITC / isotype control PE in tube N°2. Do not touch the sediment area.
4. Add 5  $\mu$ l of 7-AAD in each tube.
5. Add the sample in each tube and mix well on vortex. The recommended volume is between 20 and 100  $\mu$ l (note the volume).
6. Incubate in the dark at room temperature (20-25° C) for 15 minutes or at 4° C for 30 minutes.
7. Add 0,45 ml of 1X de Ammonium chloride lysis solution in each tube. Mix well on vortex and incubate in the dark for 10 minutes or until the sample is lysed.

Acquire in a flow cytometry or keep at 2-8° C in the dark until the analysis. Samples should be acquired within the 1 hour after lysis.

### FLOW CYTOMETRY ANALYSIS

Before acquiring samples, verify that the cytometer is correctly aligned and standardized for light scatter. Fluorescence compensation is established following the manufacturer's cytometer instructions.

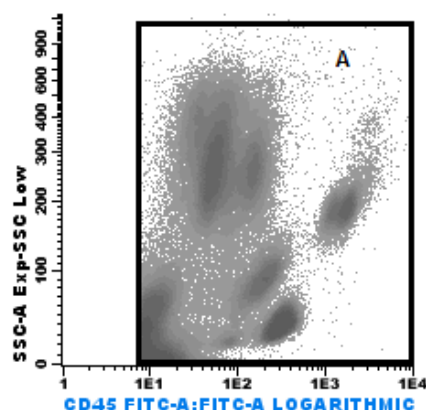
FSC and SSC parameters must be set in the linear amplification while the fluorescence intensity (FLI

parameters, FL2, FL3 FL4 ...) should be adjusted in the logarithmic amplification.

Before acquiring samples, adjust at minimum the threshold or discriminator in the FSC parameter to minimize waste and ensure that the population of interest will be included in the analysis.

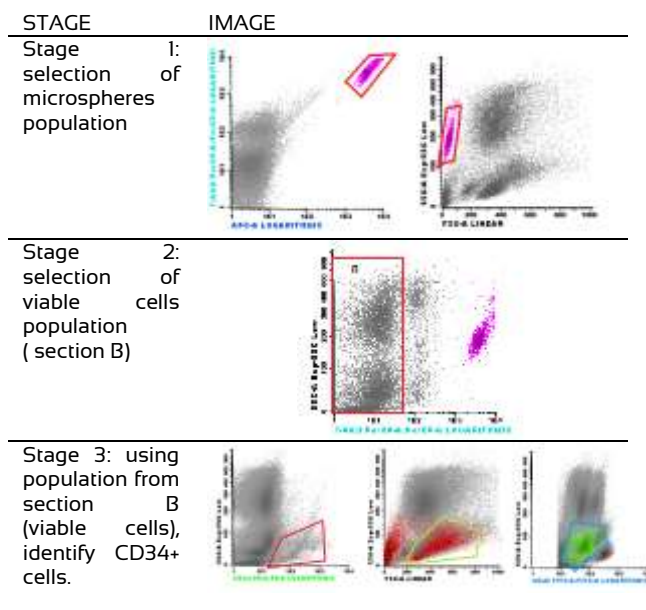
Before purchasing the flow cytometer, it is recommended to shake the samples manually and gently to ensure complete resuspension of cells and microspheres.

Select region A as shown in the picture for store the events in this region during acquisition in the cytometry:

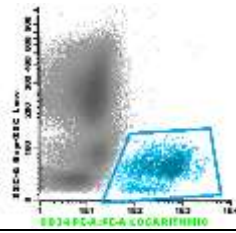


Acquire and analyze sample in the tube as much as possible. It is recommended to acquire at low or medium speed to avoid the formation of cell aggregates. If you will not acquire the entire sample is advisable to stop every 4 minutes, shake the tube manually and proceed with the acquisition.

Example of analysis:



Stage 4: Note the number and the percentage of cells CD34+



Stage 5: calculate the absolute number of cells CD34

$$\frac{\text{Absolute number of CD34 cells (cells/μl)}}{\frac{\text{N° of absolute events in CD34 population}}{\text{N° of absolute events in microspheres region}}} \times \frac{\text{IP of microspheres (indicated in the tube)}}{\text{Volume of sample used}}$$

The absolute number of the population of CD34 + cells was determined by dividing the absolute number of cells acquired CD34 + by the number of acquired microspheres, and multiplying this result by the concentration of microspheres (concentration of microspheres is indicated on the label of the tube) split by the volume of sample used. If we made some dilution, the final number must be multiplied by the dilution performed.

**LIMITATIONS OF THE PROCEDURE**

1. Incubation of antibody with cells for other than the recommended procedures may result in a reduction or loss of antigenic determinants from the cell surface.
2. The values obtained from normal individuals may vary from laboratory to laboratory; it is therefore suggested that each laboratory should establish its own normal reference range.
3. Abnormal cells or cell lines may show a higher antigen density than normal cells. In some cases, this could require the use of a greater quantity of monoclonal antibody than is indicated in the procedures for sample preparation.
4. In whole blood samples, red blood cells found in abnormal samples, as well as nucleated red cells (from both normal and abnormal specimens) may be resistant to lysis. Longer periods of red blood cell lysing may be needed in order to avoid the inclusion of unlysed cells in the lymphocyte gated region.
5. Blood samples should not be refrigerated for an extensive period (more than 24 hours), since the number of viable cells will gradually decrease, and this may have an effect on the analysis. In order to obtain the best values, they should be kept at room temperature immediately prior to incubation with the monoclonal antibody.
6. Accurate results with flow cytometric procedures depend on correct alignment and calibration of the lasers, as well as correct gate settings.

**REFERENCE VALUES**

Abnormal results in the percentage of cells expressing the antigen or in its levels of expression may be due to pathological conditions. It is advisable to know the normal antigen expression patterns in order to ensure a proper interpretation of the results<sup>4,5,6</sup>.

The values obtained from healthy individuals may vary from laboratory to laboratory; it is therefore suggested that each laboratory should establish its own normal reference range.

**CHARACTERISTICS**

SPECIFICITY

Anti CD34 clone 581, was included in the 5th International Workshop of Differentiation Antigens Human Leukocyte, WS code MA276.

The anti-CD45 antibody clone HI30 was included in the 4th workshop of differentiation antigens of human leukocytes with N816112 code.

INTERFERING

Coagulated, fixed or hemolysis samples should not be used.

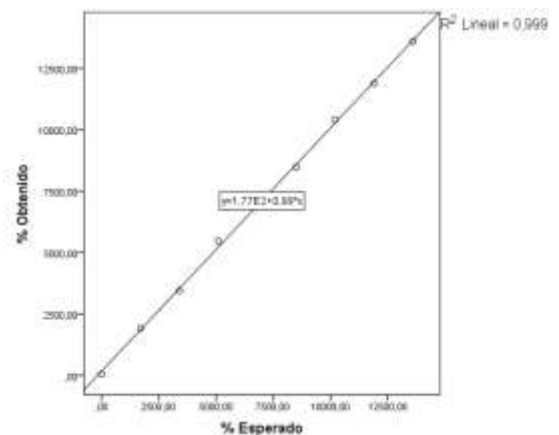
LINEARITY

For analysis of linearity, different dilutions of a positive population (293T cell line transfected with CD34, ref. H34LYS) and a negative population (293T cell line untransfected) were performed keeping constant the total number of cells, the correlation and dependence was analyzed between expected and obtained percentages<sup>8</sup>.

Obtained data are shown in the following table

Descriptive statistics

| R                  | R square | Std. Error of the Estimate | Linear regression  |
|--------------------|----------|----------------------------|--------------------|
| 1,000 <sup>a</sup> | ,99 9    | 142,9315                   | Y= 0,990x + 176,71 |



**INTERLABORATORY REPEATABILITY AND ACCURACY**

The repeatability of Stem Cell Kit was determined by testing 3 samples of commercial control with different levels of MHC with similar values to normal peripheral blood (Low \*), bone marrow (Medium \*) and blood cord or mobilized blood (H \*), performing analysis in two different laboratories over a period of 20 days<sup>7</sup>.  
\* CD-Chex CD34, Streck

Results obtained for each laboratory are shown below:

| Overall result | Low    |        | Medium |        | High   |        |
|----------------|--------|--------|--------|--------|--------|--------|
| N              | 50     |        | 50     |        | 50     |        |
| Mean value     | 0,067  |        | 0,0895 |        | 2,851  |        |
|                | SD     | CV (%) | SD     | CV (%) | SD     | CV (%) |
| Between-lab    | 1,0079 | 13,43% | 5,7253 | 9,67%  | 6,9357 | 3,85%  |
| Between-day    | 0,3755 | 5,00%  | 2,5918 | 4,38%  | 1,4463 | 0,80%  |
| Whitin-lab     | 1,0755 | 14,33% | 6,2846 | 10,61% | 7,0849 | 3,93%  |

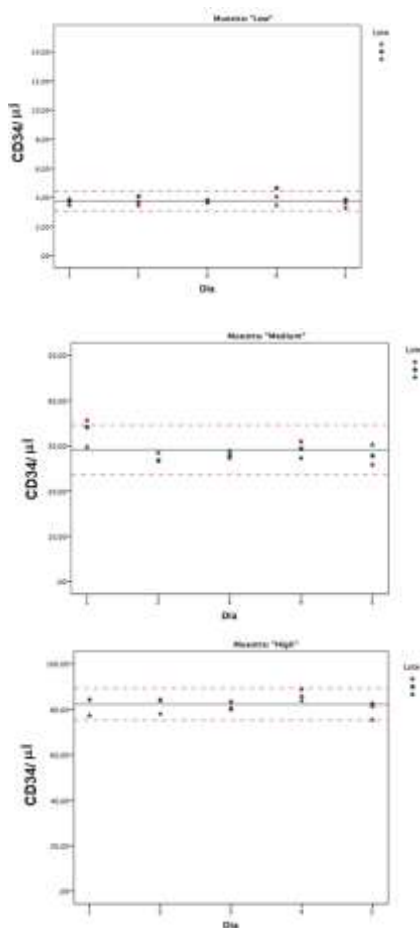
SD: Standard Deviation  
CV: Coefficient of Variation

**REPRODUCIBILITY BETWEEN BATCHES**

To demonstrate reproducibility between batches, 3 control samples with different levels of MHC CD34 +, similar values to normal peripheral blood "Low \*\*\* bone marrow "Medium \*\*\* and cord blood or mobilized blood "High \*\*\* were marked, making analysis with three different batches for 5 days not consecutives<sup>7</sup>.

\* CD-Chex CD34, Streck

The results for each sample are shown below:



Test result is shown in the following table:

| Overall result | High   |        | Medium |        | Low    |        |
|----------------|--------|--------|--------|--------|--------|--------|
| N              | 50     |        | 50     |        | 50     |        |
| Mean value     | 0,067  |        | 0,0895 |        | 2,851  |        |
|                | SD     | CV (%) | SD     | CV (%) | SD     | CV (%) |
| Between-Bath   | 4,4675 | 6,45%  | 7,7253 | 23,31% | 0,3376 | 14,35% |

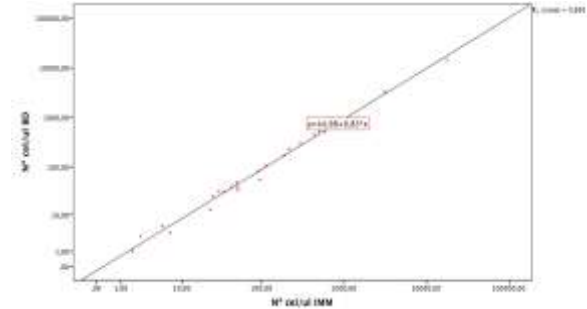
**COMPARISON OF MEASUREMENT SYSTEM**

To determine the concordance of the results, a comparative measure<sup>9</sup> procedure was performed using a kit reference \* in

bone marrow samples of healthy and diseased patients, analyzing the absolute number of CD34 + cells.

The following table shows the analysis of the results and the accuracy of the Stem Cell Kit from Immunostep respect to the reference kit \*, in a confidence interval of 95% (IC) divided by intervals: low> 10, medium 10 and 100 and high> 100 cells per microliter.

It is a linear representation of obtained data.



\* Becton Dyckison BD™ Stem Cell Enumeration Kit  
Catálogo No. 344563

**WARRANTY**

Warranted only to conform to the quantity and contents stated on the label or in the product labelling at the time of delivery to the customer. Immunostep disclaims hereby other warranties. Immunostep's sole liability is limited to either the replacement of the products or refund of the purchase price.

**REFERENCES**

1. Procedures for the collection of diagnostic blood specimens by venipuncture- approved standard; Fifth edition (2003). Wayne PA: National Committee for Clinical Laboratory Standards; Document H3-A5.
2. Standard Procedures for the Collection of Diagnostic Blood Specimens", publicado por el National Committee for Clinical Laboratory Standards (NCCLS)
3. Clinical applications of flow cytometry: Quality assurance and immunophenotyping of lymphocytes; approved guideline (1998). Wayne PA: National Committee for Clinical Laboratory Standards; Document H42-A.
4. Kotylo PK et al. Reference ranges for lymphocyte subsets in pediatric patients. Am J Clin Pathol 100:III-5 (1993)
5. Reichert et al. Lymphocyte subset reference ranges in adult Caucasians. Clin Immunol Immunopathol 60:190-208 (1991)
6. Schlossman SF, Bousmell L, Gilks W, et al, ed. Leukocyte Typing V: White Cell Differentiation Antigens. New York: Oxford University Press; 1995.
7. CLSI EP05-A3. Evaluation of Precision of Quantitative Measurement Procedures; Approved Guideline-Third Edition.
8. Evaluation of the Linearity of Quantitative measurement Procedures: A Statistical Approach; Approved Guideline-Second Edition.

9. CLSI EPO9-A3. Measurement Procedure Comparison and Bias Estimation Using Patient Samples; Approved Guideline-Third Edition.

10. Concordant expression of class II and class III CD34 epitopes on haemopoietic cells in leukapheresis and cord blood samples with CD45/CD34 dual staining. Br J Haematol. 1997 May;97(2):488-91. Rudin CEI, Garland JM, Joyner MV.

11. Sutherland DRI, Keating A, Nayar R, Anania S, Stewart AK. Sensitive detection and enumeration of CD34+ cells in peripheral and cord blood by flow cytometry. Exp Hematol. 1994 Sep;22(10):1003-10.

12. Knapp W, Dörken B, Gilks WR, et al. 1989. Leucocyte Typing IV. Oxford University Press. New York.

13. Sutherland, Keating, A., "The CD34 antigen: Structure, biology and potential clinical applications", 1992, J. Hematotherapy, 1, 115-129.

14. Krause, D.S., Fackler, M.J., Civin, C.I., Stratford, M., "CD34: Structure, biology and clinical utility", 1996, Blood, 1, 87, 1-13.

15. Fina, L., Molgaard, H.V., Robertson, d., Bradley, N.J., Monaghan, P., Delia, D., Sutherland, D.R., Baker, M.A., Greaves, M.F., "Expression of the CD34 gene in vascular endothelial cells", 1990, Blood, 75, 2417-2426.

16. Delia, D., Lampugnani, M.G., Resnati, M., Dejana, E., Ajello, A., Fontanella, E., Soligo, D., Pierotti, M.A., Greaves, M.F., "CD34 expression is regulated reciprocally with adhesion molecules in vascular endothelial cells in vitro", 1993, Blood, 81, 1001-1008.

17. Simmons, P.J., Torok-Storb, B., "CD34 expression by stromal precursors in normal human adult bone marrow", 1991, Blood, 78, 2848-2853.

**MANUFACTURED BY:**



**Immunostep S.L**  
Avda. Universidad de Coimbra, s/n  
Cancer Research Center (CIC)  
Campus Miguel de Unamuno  
37007 Salamanca (Spain)  
Tel. (+34) 923 294 827  
[www.immunostep.com](http://www.immunostep.com)